

The

# Berrima 28

Previously the Whitelock 28 on display at Redstone





The

# Berrima 28

Previously the Whitelock 28 on display at Redstone



3



2



2



1

Plan Size (WxL)

**12.60m x 24.23m**

Minimum Lot Size (WxL)

**14m x 32m**

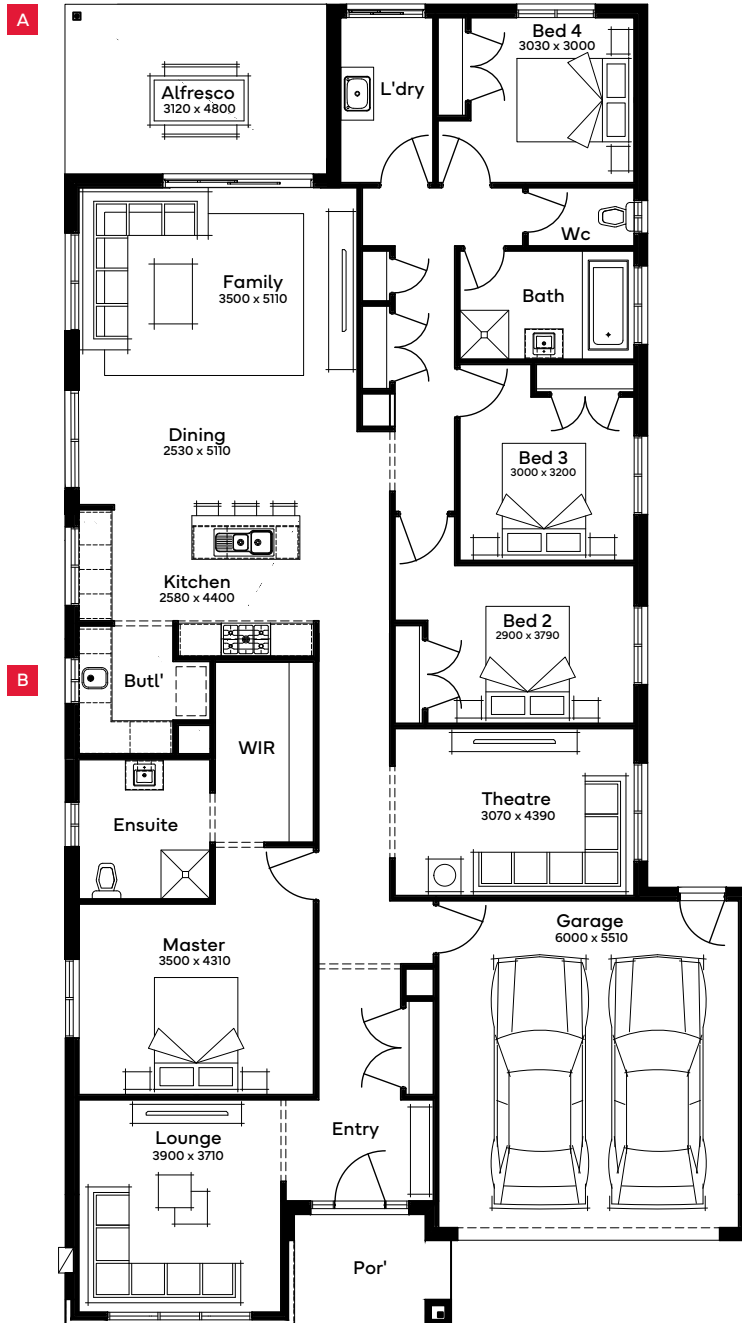
The Berrima 28, a stylish 4-bedroom, 2-bathroom home with 3 living spaces, epitomises easy living. It features spacious bedrooms, including a main bedroom with a walk-in robe and large ensuite, a theatre room, and an expansive open-plan living and kitchen area. The floor plan, generously proportioned, flows seamlessly to an alfresco area, ideal for entertaining. With its thoughtful design and comfortable spaces, this home makes it easy to feel right at home.

#### As Displayed Specifications

Grand Floor	206.88m <sup>2</sup>	22.27sq
Porch	6.00m <sup>2</sup>	0.65sq
Garage	36.58m <sup>2</sup>	3.94sq
Alfresco	15.35m <sup>2</sup>	1.65sq
<b>Total</b>	<b>264.81m<sup>2</sup></b>	<b>28.50sq</b>

As Displayed Structural Options

- A** Larger Alfresco
- B** Butler's Pantry



Scan for all design and facade options available with the Berrima 28; or visit [simonds.com.au](http://simonds.com.au)

Lot 124 President Road, Sunbury

[simonds.com.au](https://simonds.com.au)  1300 SIMONDS

