

The

# Ash 27

Previously the *Buller 27* on display at **Fyansford Estate**





The

# Ash 27

Previously the *Buller 27* on display at **Fyansford Estate**

 4  2  2  2  1

Plan Size (WxL)

**12.51m x 26.80m**

Minimum Lot Size (WxL)

**14m x 30m**

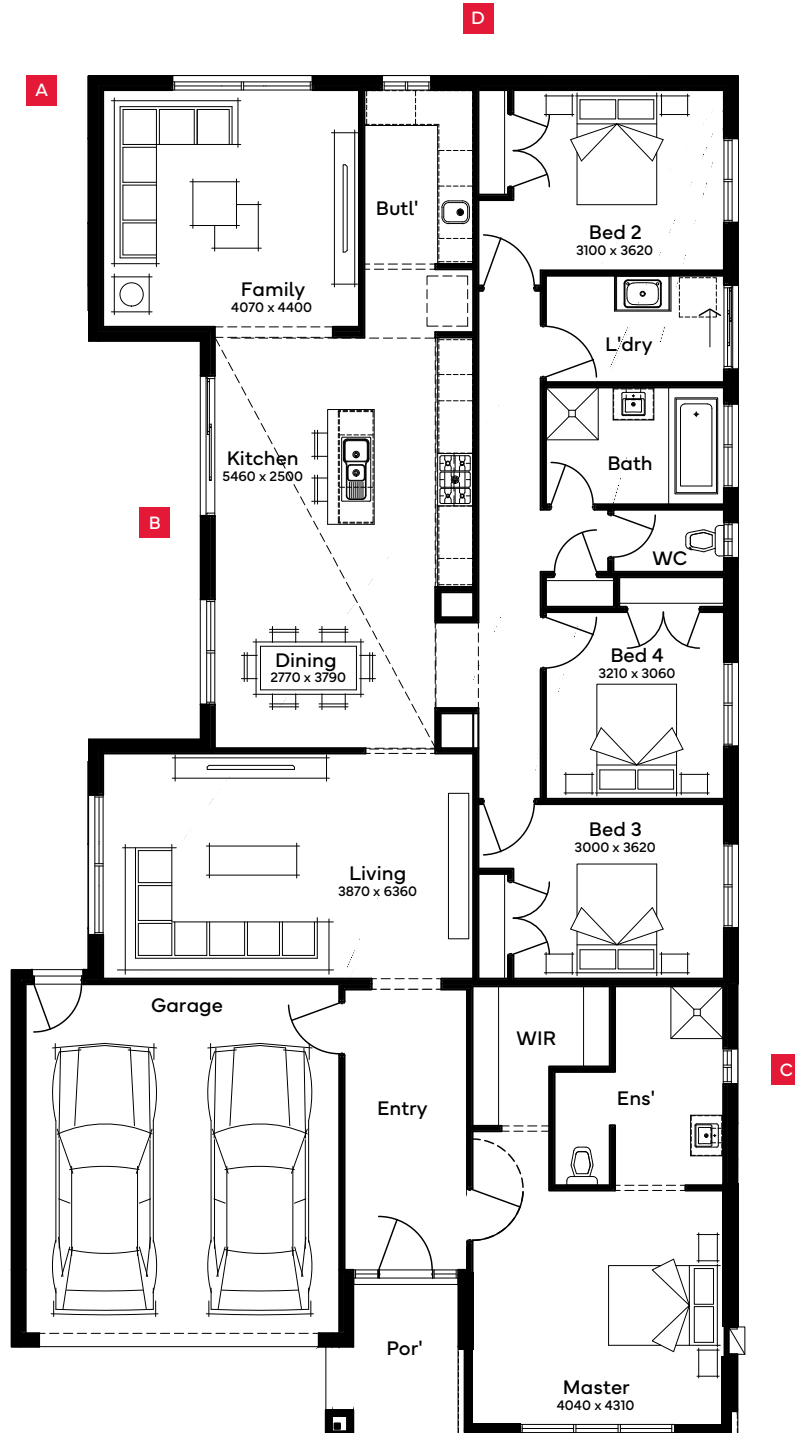
The Ash 27, ideal for 14m+ blocks, is a statement home with 4 bedrooms, 2 bathrooms, and 2 living spaces. Its design captivates with bold and exotic elements, offering a memorable living experience. The master bedroom, a relaxing retreat, overlooks the front garden. The home's floor plan also includes a spacious living area, connecting to a gourmet kitchen, making it perfect for family gatherings.

#### As Displayed Specifications

Ground Floor	207.17m <sup>2</sup>	22.30sq
Porch	4.64m <sup>2</sup>	0.50sq
Garage	36.50m <sup>2</sup>	3.93sq
Alfresco	25.17m <sup>2</sup>	2.71sq
Total	273.47m <sup>2</sup>	22.44sq

As Displayed Structural Options

- A** Kitchen & Living Rear Flip with Butler's Pantry
- B** Raised Ceiling
- C** Ensuite & WIR
- D** Alfresco (Not shown)



Scan for all design and facade options available with the Ash 27; or visit [simonds.com.au](http://simonds.com.au)

**Fyansford Estate**

Lot 2112 Dell Boulevard, Fyansford

[simonds.com.au](https://simonds.com.au)  1300 SIMONDS

